



AIR TORQUE

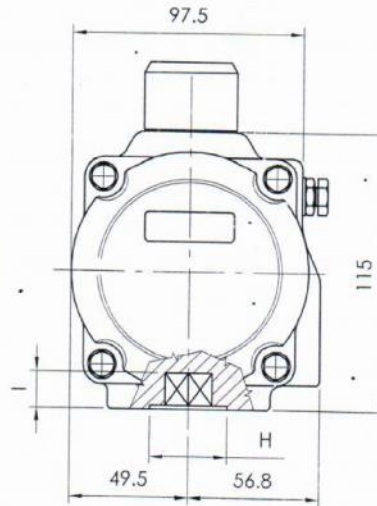
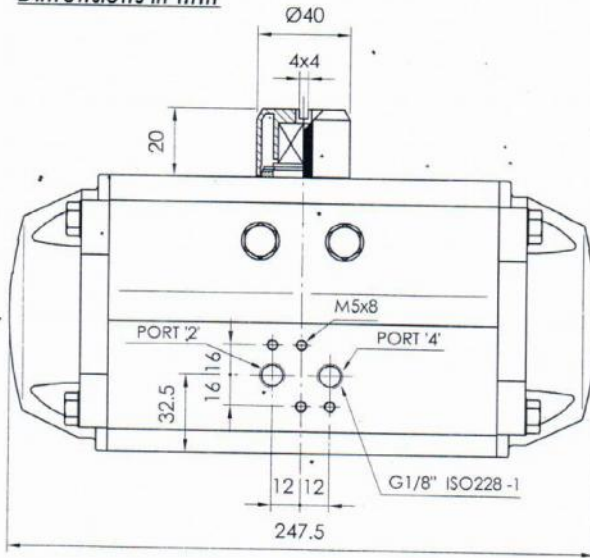
AIR TORQUE S.p.A.
 via Alla Campagna, N°1
 24060 Costa di Mezzate (Bg) Italy
 Tel.: +39 035 682299
 Fax: +39 035 687791
 E-mail: info@airtorque.it

Technical Data Sheet n° AT251DM
 Issued on: 06/04

Page: 1/1

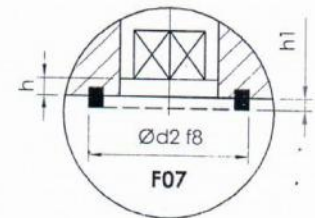
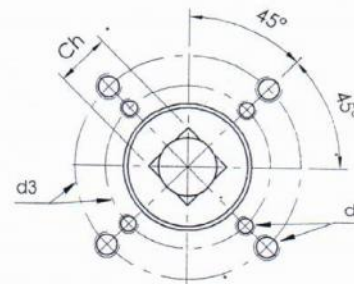
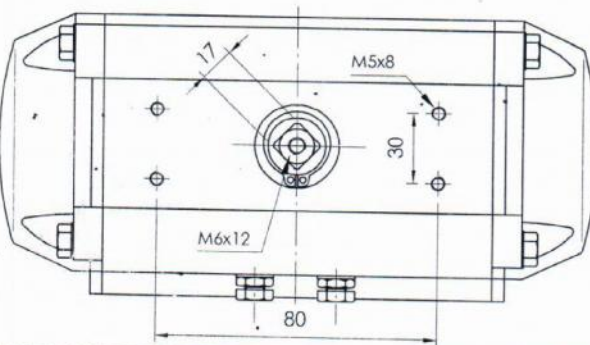
Model AT251
DA and SR - 90°

Dimensions in mm



Available flange:
 ⇒ F07
 ⇒ F05 + F07

Flange Dimensions		
ISO 5211	F05	F07
d2 f8	NA	55
d3	50	70
d4	M6x9	M8x12
H	40	55
Ch	17	17
l min.	19	19
h min.	1,5	1,5
h1	NA	2
Pressure connection	B 1	
Ancillary Attachment	AA 1	



Spigot available only on request

TYPE	OUTPUT TORQUE FOR DOUBLE ACTING IN Nm											WEIGHT (Kg)											
	2,5 bar		3 bar		3,5 bar		4 bar		4,2 bar		4,5 bar		5 bar		5,5 bar		6 bar		7 bar		8 bar		
Pressure	0°	90°	0°	90°	0°	90°	0°	90°	0°	90°	0°	90°	0°	90°	0°	90°	0°	90°	0°	90°	0°	90°	
D	45,8		54,9		64,1		73,2		76,9		82,4		91,5		101		110		128		146		3,88

TYPE	OUTPUT TORQUE FOR SPRING RETURN IN Nm											Spring stroke	WEIGHT (Kg)												
	2,5 bar		3 bar		3,5 bar		4 bar		4,2 bar		4,5 bar			5 bar		5,5 bar		6 bar		7 bar		8 bar			
Pressure	0°	90°	0°	90°	0°	90°	0°	90°	0°	90°	0°	90°	0°	90°	0°	90°	0°	90°	0°	90°	0°	90°	90°	0°	
S 05	27,4	16,9	36,6	26	45,7	35,2	54,9	44,3	58,5	48	64	53,5	73,2	62,6									28,9	18,3	4,14
S 06	23,8	11,1	32,9	20,3	42,1	29,4	51,2	38,6	54,9	42,2	60,4	47,7	69,5	56,9	78,7	66							34,7	22	4,20
S 07			29,2	14,5	38,4	23,6	47,5	32,8	51,2	36,4	56,7	41,9	65,8	51,1	75	60,2	84,2	69,4					40,4	25,7	4,25
S 08					34,7	17,9	43,9	27	47,5	30,7	53	36,2	62,2	45,3	71,3	54,5	80,5	63,6	98,8	81,9			46,2	29,3	4,30
S 09							40,2	21,2	43,9	24,9	49,4	30,4	58,5	39,5	67,7	48,7	76,8	57,8	95,1	76,1	113	94,5	52	33	4,36
S 10									45,7	24,6			54,8	33,8	64	42,9	73,1	52,1	91,5	70,4	110	98,7	57,8	36,7	4,40
S 11													51,2	28	60,3	37,1	69,5	46,3	87,8	64,6	106	82,9	63,5	40,3	4,46
S 12															56,7	31,4	65,8	40,5	84,1	58,8	102	77,1	69,3	44	4,50

Max. Pressure	Rotation	Screw stroke Adjustment	Chamber φ (mm)	Air Volume (L)		Moving Time (Sec.) (A)		Operating Temperature (°C) (B)		
				Opening	Closing	Opening	Closing	STD (standard)	HT (high temperature)	LT (low temperature)
8 bar	90° ±4°	For 1° adj. need 1/5 Turn	88	0,51	0,78	D 0,4	D 0,5	NBR "O" ring -20 to +80	FPM "O" ring -15 to +150	Silicone "O" ring -40 to +80
	S 0,5					S 0,6				

Notes:
 (A) The above indicated moving time of the actuator, are obtained in the following test conditions:
 (1) Room Temperature, (2) Actuator Stroke 90°, (3) Solenoid Valve with Orifice Of 4 mm and a flow capacity Qn 400 L/min., (4) Inside pipe diameter 8 mm, (5) Medium clean air, (6) Air supply pressure 5,5 bar (79,75 Psi), (7) Actuator without external resistance-load. **Cautions: obviously on the field applications when one or more of the above parameter are different, the moving time will be different.**
 (B) For HT (high temperature) and LT (low temperature) services, a special Lubricant is requested. Please contact Air Torque factory.

Operating Medium:
 The operating medium must be free of dust and oil. The maximum particle size must not exceed 30µm (ISO 8573 Part1, Class5). In order to prevent water condensation and/or solidification (ice, when actuator work below 0°C), the operating medium must have a dew point equal to -20°C or, at least 10°C below the ambient temperature (ISO 8573 Part1, Class3).



AIR TORQUE

AIR TORQUE S.p.A.
 via Alla Campagna, N°1
 24060 Costa di Mezzate (Bg) Italy
 Tel.: +39 035 682299
 Fax: +39 035 687791
 E-mail: info@airtorque.it

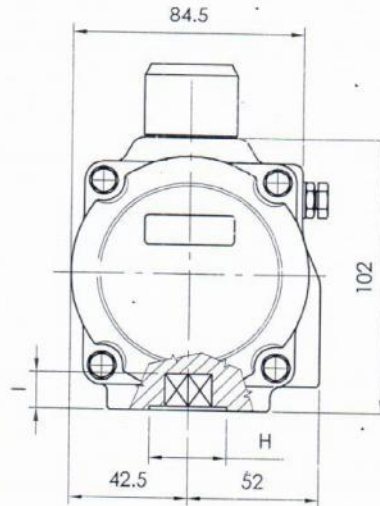
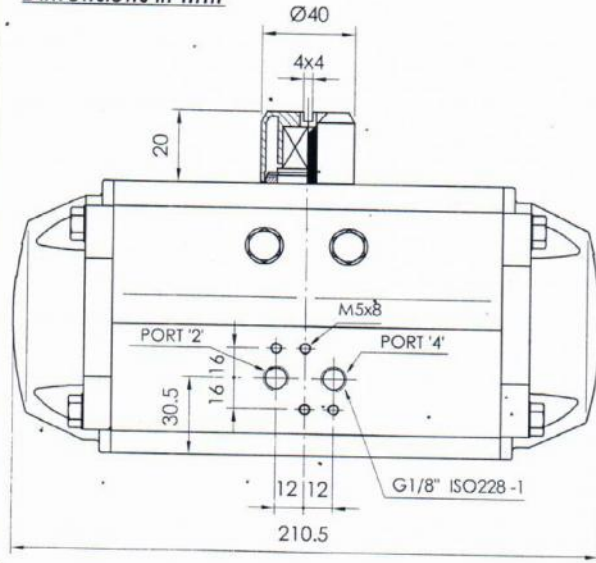
Technical Data Sheet n° AT201DM

Issued on: 06/04

Page: 1/1

Model AT201
DA and SR - 90°

Dimensions in mm

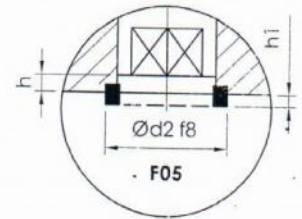
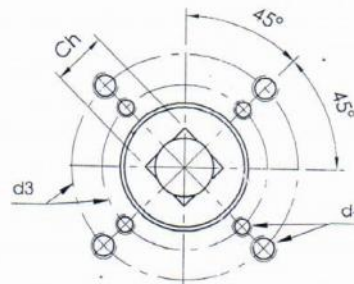
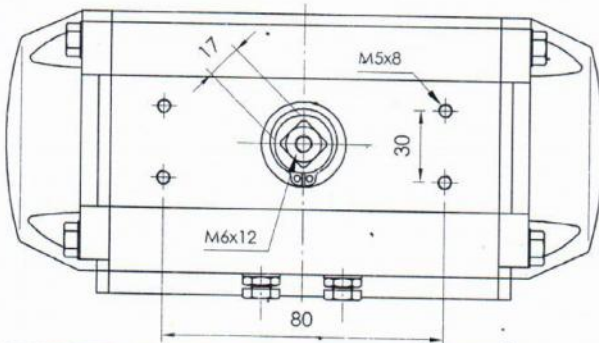


Available flange:

⇒ F05

⇒ F05 + F07

Flange Dimensions		
ISO 5211	F05	F07
d2 f8	35	NA
d3	50	70
d4	M6x9	M8x12
H	35	35
Ch	14	17
l min.	16	19
h min.	1,5	1,5
h1	2	NA
Pressure connection	B 1	
Ancillary Attachment	AA 1	



Spigot available only on request

TYPE	OUTPUT TORQUE FOR DOUBLE ACTING IN Nm										WEIGHT (Kg)	
	2,5 bar 0° 90°	3 bar 0° 90°	3,5 bar 0° 90°	4 bar 0° 90°	4,2 bar 0° 90°	4,5 bar 0° 90°	5 bar 0° 90°	5,5 bar 0° 90°	6 bar 0° 90°	7 bar 0° 90°		8 bar 0° 90°
D	29,1	34,9	40,7	46,5	48,9	52,4	58,2	64	69,8	81,4	93,1	2,82

TYPE	OUTPUT TORQUE FOR SPRING RETURN IN Nm										Spring stroke 90° 0° End Start	WEIGHT (Kg)	
	2,5 bar 0° 90°	3 bar 0° 90°	3,5 bar 0° 90°	4 bar 0° 90°	4,2 bar 0° 90°	4,5 bar 0° 90°	5 bar 0° 90°	5,5 bar 0° 90°	6 bar 0° 90°	7 bar 0° 90°			8 bar 0° 90°
S 05	18 11,8	23,8 17,6	29,7 23,4	35,5 29,2	37,8 31,6	41,3 35,0	47,1 40,9					17,3 11,1	2,99
S 06	15,8 8,3	21,6 14,1	27,5 19,9	33,3 25,8	35,6 28,1	39,1 31,6	44,9 37,4	50,7 43,2				20,8 13,3	3,02
S 07		19,4 10,7	25,2 16,5	31,1 22,3	33,4 24,6	36,9 28,1	42,7 33,9	48,5 39,8	54,3 45,6			24,2 15,5	3,06
S 08			23 13	28,8 18,8	31,2 21,2	34,7 24,7	40,5 30,5	46,3 36,3	52,1 42,1	63,7 53,7		27,7 17,7	3,09
S 09				26,6 15,4	29 17,7	32,5 21,2	38,3 27	44,1 32,8	49,9 38,6	61,5 50,3	73,2 61,9	31,2 19,9	3,12
S 10						30,2 17,7	36,1 23,6	41,9 29,4	47,7 35,2	59,3 46,8	71 58,5	34,6 22,1	3,16
S 11							33,8 20,1	39,7 25,9	45,5 31,7	57,1 43,4	68,7 55	38,1 24,3	3,19
S 12								37,5 22,4	43,3 28,3	54,9 39,9	66,5 51,5	41,5 26,5	3,22

Max. Pressure	Rotation	Screw stroke Adjustment	Chamber ø (mm)	Air Volume (L)		Moving Time (Sec.) (A)		Operating Temperature (°C) (B)		
				Opening	Closing	Opening	Closing	STD (standard)	HT (high temperature)	LT (low temperature)
8 bar	90° ±4° at 0° and 90°	For 1° adj. need 1/6 Turn	75	0,31	0,49	D 0,30 S 0,40	D 0,35 S 0,50	NBR "O" ring -20 to +80	FPM "O" ring -15 to +150	Silicone "O" ring -40 to +80

Notes:

(A) The above indicated moving time of the actuator, are obtained in the following test conditions:
 (1) Room Temperature, (2) Actuator Stroke 90°, (3) Solenoid Valve with Orifice Of 4 mm and a flow capacity Qn 400 L/min., (4) Inside pipe diameter 8 mm, (5) Medium clean air, (6) Air supply pressure 5,5 bar (79,75 Psi), (7) Actuator without external resistance load. **Cautions: obviously on the field applications when one or more of the above parameter are different, the moving time will be different.**

(B) For HT (high temperature) and LT (low temperature) services, a special Lubricant is requested. Please contact Air Torque factory.

Operating Medium:

The operating medium must be free of dust and oil. The maximum particle size must not exceed 30µm (ISO 8573 Part1, Class3). In order to prevent water condensation and/or solidification (ice, when actuator work below 0°C), the operating medium must have a dew point equal to -20°C or, at least 10°C below the ambient temperature (ISO 8573 Part1, Class3).



AIR TORQUE

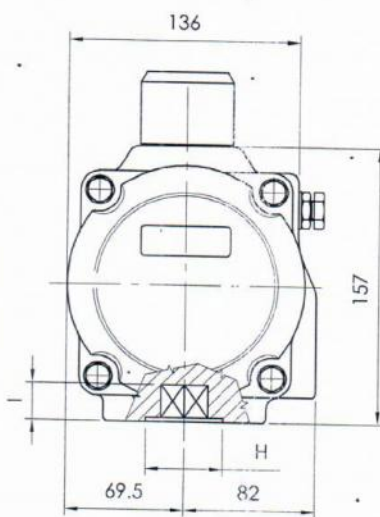
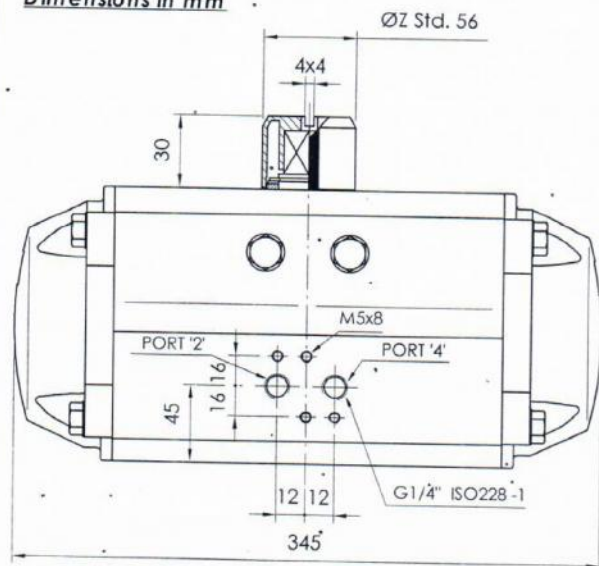
AIR TORQUE S.p.A.
 via Alla Campagna, N°1
 24060 Costa di Mezzate (Bg) Italy
 Tel.: +39 035 682299
 Fax: +39 035 687791
 E-mail: info@airtorque.it

Technical Data Sheet n° AT401D
 Issued on: 06/04

Page: 1/1

Model AT401 DA and SR - 90°

Dimensions in mm

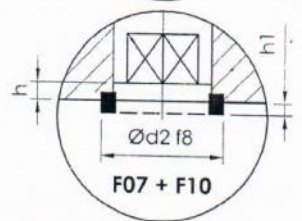
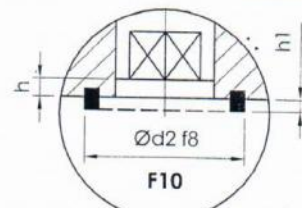
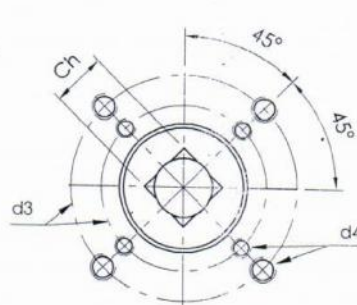
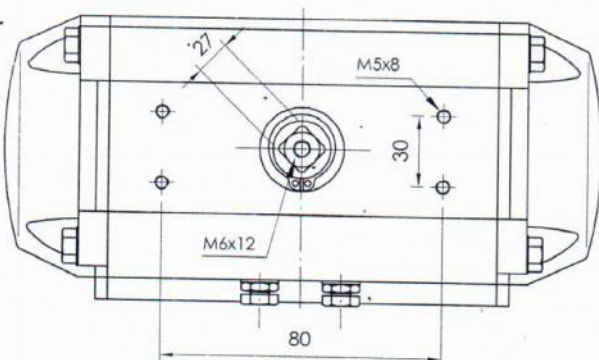


Available flange:

⇒ F10

⇒ F07 + F10

Flange Dimensions			
ISO 5211	F07	F10	
d2 f8	55	70	
d3	70	102	
d4	M8x12	M10x15	
H	55	70	
Ch	22	22	27
I min.	24	24	29
h min.	1,5	1,5	
h1	2,5	2	
Position Indicator for proximity			Z = 65
Pressure connection			B 2
Ancillary Attachment			AA 2



Spigot available only on request

TYPE	OUTPUT TORQUE FOR DOUBLE ACTING IN Nm												WEIGHT (Kg)											
	2,5 bar		3 bar		3,5 bar		4 bar		4,2 bar		4,5 bar			5 bar		5,5 bar		6 bar		7 bar		8 bar		
Pressure	0°	90°	0°	90°	0°	90°	0°	90°	0°	90°	0°	90°	0°	90°	0°	90°	0°	90°	0°	90°	0°	90°		
D	138		166		194		222		233		249		277		305		332		388		443		10,2	

TYPE	OUTPUT TORQUE FOR SPRING RETURN IN Nm												Spring stroke	WEIGHT (Kg)												
	2,5 bar		3 bar		3,5 bar		4 bar		4,2 bar		4,5 bar				5 bar		5,5 bar		6 bar		7 bar		8 bar			
Pressure	0°	90°	0°	90°	0°	90°	0°	90°	0°	90°	0°	90°	0°	90°	0°	90°	0°	90°	0°	90°	0°	90°	90°	0°		
S 05	86	56,1	114	83,8	141	111	169	139	180	150	197	167	224	195									82,4	52,5	11,0	
S 06	75,5	39,6	103	67,3	131	95	159	123	170	134	186	150	214	178	242	206							98,9	63	11,1	
S 07			92,7	50,8	120	78,5	148	106	159	117	176	134	203	162	231	189	259	217					115	73,5	11,3	
S 08				110	62	138	89,7	149	101	165	117	193	145	221	173	248	201	304	256					132	84	11,5
S 09						127	73,3	138	84,3	155	101	182	129	210	156	238	184	293	239	349	295			148	94,5	11,6
S 10										144	84,5	172	112	200	140	227	168	283	223	338	278			165	105	11,8
S 11												161	95,7	189	123	217	151	272	206	328	262			181	116	11,9
S 12													179	107	206	135	262	190	317	245			198	126	12,1	

Max. Pressure	Rotation	Screw stroke Adjustment	Chamber φ (mm)	Air Volume (L)		Moving Time (Sec.) (A)				Operating Temperature (°C) (B)				
				Opening	Closing	Opening	Closing	STD (standard)	HT (high temperature)	LT (low temperature)				
8 bar	90° ±4° at 0° and 90°	For 1° adj. need 1/4 Turn	125	1,54	2,34	D 0,9 S 1,2	D 1,1 S 1,4	STD (standard)	NBR "O" ring	FPM "O" ring	Silicone "O" ring	-20 to +80	-15 to +150	-40 to +80

Notes:
 (A) The above indicated moving time of the actuator, are obtained in the following test conditions:
 (1) Room Temperature, (2) Actuato Stroke 90°, (3) Solenoid Valve with Orifice Of 4 mm and a flow capacity Qn 400 L/min., (4) Inside pipe diameter 8 mm, (5) Medium clean air, (6) Air supply pressure 5,5 bar (79,75 Psi), (7) Actuator without external resistance load. **Cautions: obviously on the field applications when one or more of the above parameter are different, the moving time will be different.**
 (B) For HT (high temperature) and LT (low temperature) services, a special Lubricant is requested. Please contact Air Torque factory.

Operating Medium:

The operating medium must be free of dust and oil. The maximum particle size must not exceed 30µm (ISO 8573 Part1, Class3). In order to prevent water condensation and/or solidification (ice, when actuator work below 0°C), the operating medium must have a dew point equal to -20°C or, at least 10°C below the ambient temperature (ISO 8573 Part1, Class3).