

Item	Figure	Service number (12NC)	Description	Qty/mod	Repair	PI	Remarks	FNC	SF	Opal-XII
32	8-15	9965 000 09050	Cam	8			Cam	X		
33	8-15	9965 000 09049	Bevel gear 1	4		Y	Bevel gear 1	X		
34	8-15	5322 522 10781	Bevel gear 2	4			Bevel gear 2	X		
35	8-15	9965 000 09051	Pin, Cam	8			Pin, Cam	X		
36	8-15	9965 000 09048	Circlip, E-ring 0.8	16			Circlip, E-ring 0.8 (set of 20 pieces)	X		
37	8-15	9965 000 09052	Washer	4			Washer	X		
38	8-15	5322 532 11915	Circlip	4			Circlip large	X		
39+28	8-15	9965 000 11068	Shaft+nozzle block (without nozzles!)	4		Y	Shaft+nozzle block (matched pair)	X		
40	8-15	9965 000 15432	Bearing, Holder	4			Bearing holder with indexing pin	X		
42	8-15	5322 520 10696	Bearing	4			Bearing	X		
59	8-15	5322 528 11373	Valve	4		Y	Valve clutch	X		
60	8-15	5322 532 13171	Packing	4			Packing	X		
62	8-15	5322 462 10762	Plug 2 assy	4			Plug 2 assy containing items 62, 3, 7	X		X
64	8-15	9965 000 09055	Belt, head	2		Y	Belt head	X		X
66	8-15	5322 530 10292	O-ring	12			O-ring air inlets 5x1.0	X		X
67	8-15	9965 000 03812	Sensor	4		Y	1 sensor E2S-Q22 L=350 for clutch	X		X
68	8-15	9965 000 03813	Sensor	4		Y	1 sensor E2S-Q22 L=300 for head down sensor 2,4,6,8	X		X
69	8-15	9964 000 03810	Sensor	4		Y	1 sensor E2S-Q22B L=300 for head down sensor 1,3,5,7	X		X
68+69	8-15	5322 132 00138	Sensor 4, complete assy	1		Y	Head down sensors, (4xE2S-Q22, 4xE2S-Q22B)	X		X
70	8-15	5322 132 00139	Sensor 5, assy	1		Y	Nozzle position sensors (8 x E2S-Q12)	X		X
71	8-15	9965 000 10927	Sensor	3		Y	Sensor head assy for head down sensing	X		X
72	8-15	9965 000 09058	Sensor 3, assy	1		Y	R-right sensor	X		X
77	8-15	5322 360 20106	Muffler	7			Muffler KM-05	X		X
78	8-15	5322 528 11375	Joint	2			Joint \$SLH8-01	X		X
79	8-15	5322 528 11376	Joint	2			Joint \$SLH6-01	X		X
80A	8-15	9965 000 03808	Valve speed select	8		Y	Up/down speed	X		X
80B	8-15	9965 000 03807	Valve up/down	8		Y	Up/down select	X		X
81A	8-15	9965 000 09042	Single ejector	8		Y	Single ejector	X		X
81B	8-15	5322 360 10209	Blow off valve	8		Y	Blow off valve	X		X

TABLE 8-16

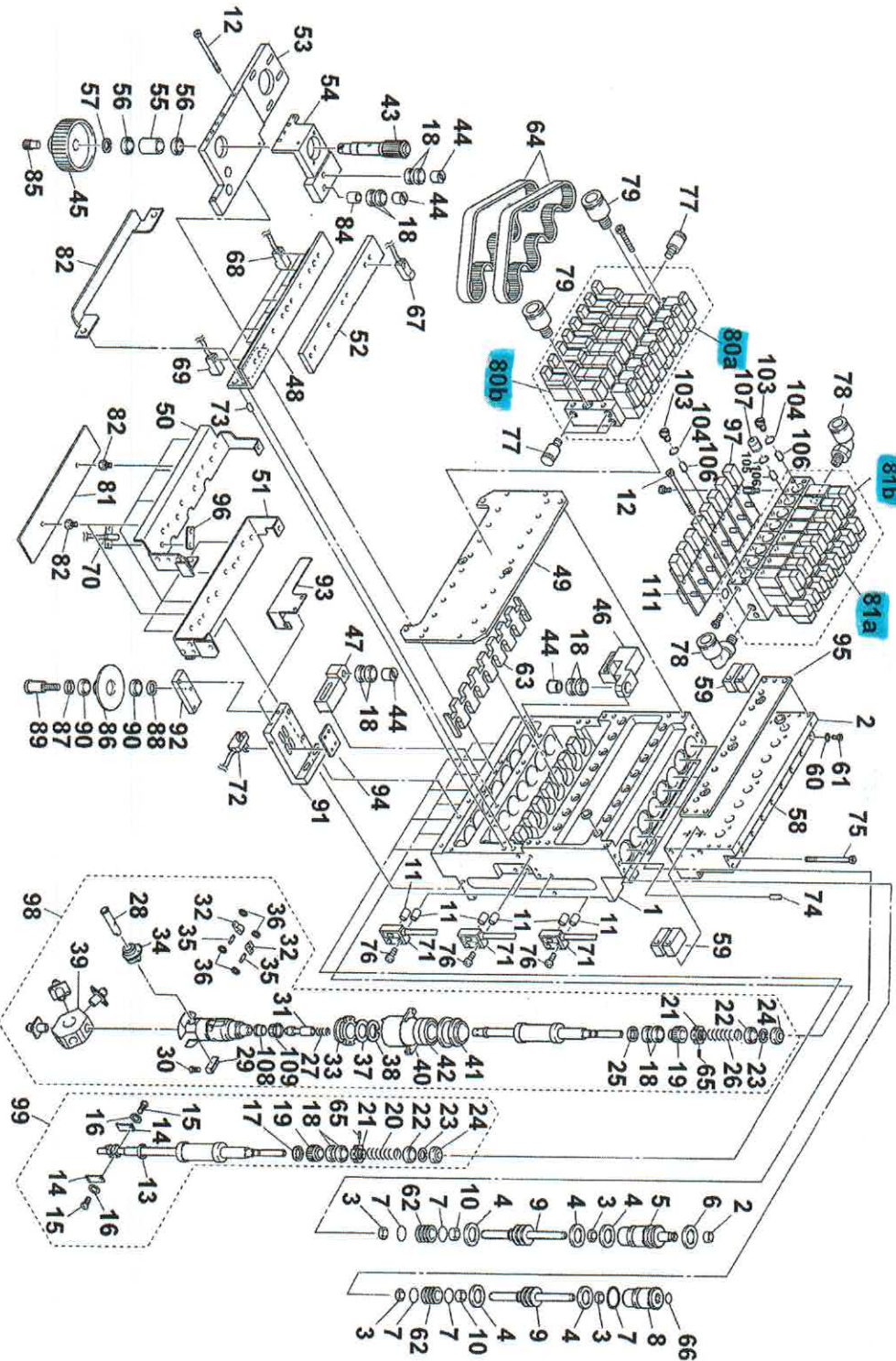


FIGURE 8-14

Head assembly