

Brad® applicom™ Ethernet Network Interface cards

PCI Universal, PCI Express

molex®

Quickly and easily connect your PC-based industrial applications to the industrial world with applicom™ intelligent communication solutions

applicom™ intelligent communication offers complete and ready-to-use solutions that cover more than 40 protocols within a wide choice of industrial networks and fieldbuses including Ethernet, Profibus, WorldFIP and Serial Links. These communication solutions connect PC-based applications (HMI, SCADA, MES, custom applications) to devices including programmable controllers, I/O modules, Panel PCs, process instruments and other industrial equipment.

With applicom™ smart built-in processor technology, each network interface card (NIC) is able to execute all management and processing (polling, frame management, etc) of communication protocols without using a computer's processing (CPU) time; resulting in extremely fast, efficient application performance.

applicom™ solutions are recommended for SCADA/HMI, and custom automation control systems which require powerful data acquisition to manage a large volume of I/O data. applicom™ cards are successfully installed around the world in sectors as varied as oil and gas, automotive, food processing, technical building management, and transportation.

Features and Benefits

Fast data acquisition between PC-based applications and industrial devices connected to Ethernet TCP/IP

Enables quick return-of-investment; single development library and OPC server reduce the time required to learn and integrate applicom™ products in to system architectures

On-board co-processor

Eliminates data bottlenecks, ensuring delivery of time critical information; simultaneously run all TCP/UDP protocols in Client/Server modes

Integrated package includes all protocols

Provides all-in-one solution for customers

Combine several cards (up to 8) and run simultaneously from 1 to 32 protocols on a single PC

Optimum choice for HMI/SCADA applications

Combo versions: -Ethernet + Profibus (1.5 Mbps)- Ethernet + Serial (38.4 Kbps)

Enables fast integration of industrial communication into applications (configuration, diagnostic, data servers, development libraries)

Conformal coated version

Improves and extends working life of card and ensures reliability in extreme or humid conditions

Applications

Supervision / Scada to monitor plant

HMI; Acquisition of process data on panel pc to manage complex machine

Active front-end acquisition for building management systems such as fire detection, access control, power distribution, HVAC

Measures and bench tests for process simulation, car engine validation, and experimental prototypes

Design tools for custom solutions such as a gateway feature, time table management, alarming, etc.



Brad® applicom™ Ethernet NIC

CE

RoHS

PCI EXPRESS



Support of Windows® 8 and 2012 Server

Brad[®] applicom[™] Ethernet Network Interface cards

PCI Universal, PCI Express

molex[®]

Specifications

PRODUCT PACKAGE

Engineering Tools
 Configuration console
 Test and diagnostic tools

Data Servers
 OPC DA v3.0 and v2.05
 Wonderware DAServer
 Wonderware I/O - (SuiteLink/FastDDE)

Includes Development Libraries
 Visual Studio (VB/C++/C samples)
 MS Visual Studio 2005 (VB.Net and C# samples)
 Installed on local disc
 Other unsupported samples (Borland Delphi, Windev and National Instruments (LabWindows CVI, LabVIEW/VI) on CD Rom only)

Supported OS:
 Windows (32-bit and 64-bit): 8, 2012 Server, 7, 2008 Server, Vista, 2003 Server

TECHNICAL DATA

Bus Format
 PCI Universal bus 3.3V/5V (PCI-X compatible)
 PCI Express 1x

Hardware Plug & Play
 AMD SC520
 16 Mb SDRAM
 4 Mb Flash Memory
 Size (mm): 167 x 106 x 17

COMMUNICATION PORTS

1 Ethernet port
 Fast Ethernet 10/100 Mbps, auto negotiating
 Base-T (RJ45), 4 leds (Rx, Tx, Link, 10/100)

1 Profibus port
 D-Sub, 9 pin, female
 2 leds (TX/RX)
 RS485 with galvanic insulation (500 V)
 9.6 Kbps to 1.5 Mbps

1 Serial port
 D-Sub, 9pin, male
 2 leds (TX/RX)
 RS485/RS422 with galvanic insulation (500 V)
 50 bps to 38.4 Kbps

PROTOCOLS

Ethernet TCP/IP (manage Client/Server modes simultaneously)
 Altus – Alnet II (AL 200x, Webgate)
 Alstom – SRTP (C80-35, C80-75)
 Allen-Bradley – EtherNet/IP (PCCC) (Logix, PLC-5 and SLC 500)
 GE Fanuc – SRTP (90-30, 90-70)
 Mitsubishi – Melsec (A, Q)
 Omron – FINS (C, CV, CS)
 Schneider – Open Modbus TCP
 Schneider – UNI-TE (Premium & Micro)
 Siemens – Industrial Ethernet (S5, S7, TI)
 UDP Send/Receive (Free messaging)

Ethernet ISO

Schneider – Ethway
 Siemens – Industrial Ethernet ISO (S5, S7, TF and TI)

Profibus

Profibus DP-V0 Master Class-1 and Class-2
 FDL for S5 Master (Siemens S5)
 S7/MPI Master (Siemens S7)
 Send/Receive on FDL (Develop your free messaging on Profibus)

Serial

Allen-Bradley – DF1 Master
 GE Fanuc – SNP-X Master
 Elsag Bailey – Data Link Master
 Modbus Master / Slave (ASCII and RTU)
 Omron – Sysmac Way Master
 Saia – S-Bus Master
 Schneider – Uni-Telway Master/Slave
 Siemens – 3964/3964R Master
 Siemens – AS511 Master
 Siemens – PPI/PPI+ Master
 Siemens – TI-Dir Master

CONFORMANCES

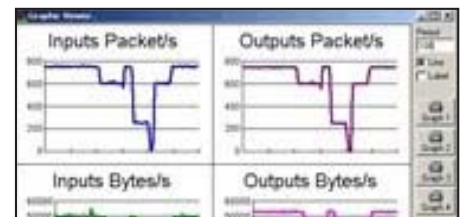
CE, RoHS, OPC Certified, PCI Express certified, Rockwell Encompass, Schneider Collaborative



Engineering Console



OPC Server



Diagnostic Tools

Ordering Information

Order No.	Engineering No.	Description
112000-0005	APP-ETH-PCU-C	applicom PCU2000ETH PCI Network Interface Card for Ethernet
112000-5026	APP-ETH-PCIE	applicom PCIE2000ETH PCI Express Network Interface Card for Ethernet
112000-5039	APP-ETH-PCIE-CC(*)	applicom PCIE2000ETH PCI Express Network Interface Card for Ethernet
112000-0001	APP-EPB-PCU-C	applicom PCU2000ETH PCI Network Interface Card for Ethernet + Profibus
112000-5028	APP-EPB-PCIE	applicom PCIE2000ETH PCI Express Network Interface Card for Ethernet + Profibus
112000-0003	APP-ESR-PCU-C	applicom PCU2000ETH PCI Network Interface Card for Ethernet + Serial
112000-5027	APP-ESR-PCIE	applicom PCIE2000ETH PCI Express Network Interface Card for Ethernet + Serial

(*): Conformal coating material is applied to PCB to protect against moisture, dust, and chemicals.

Windows[®] and the Windows logo are trademarks of the Microsoft group of companies
 PROFIBUS is a trademark of PROFIBUS International
 PCI Universal, PCI Express and the PCI Express logo are registered trademarks of PCI-SIG[®]
 Encompass is a trademark of Rockwell Automation

www.molex.com/link/bradnics.html