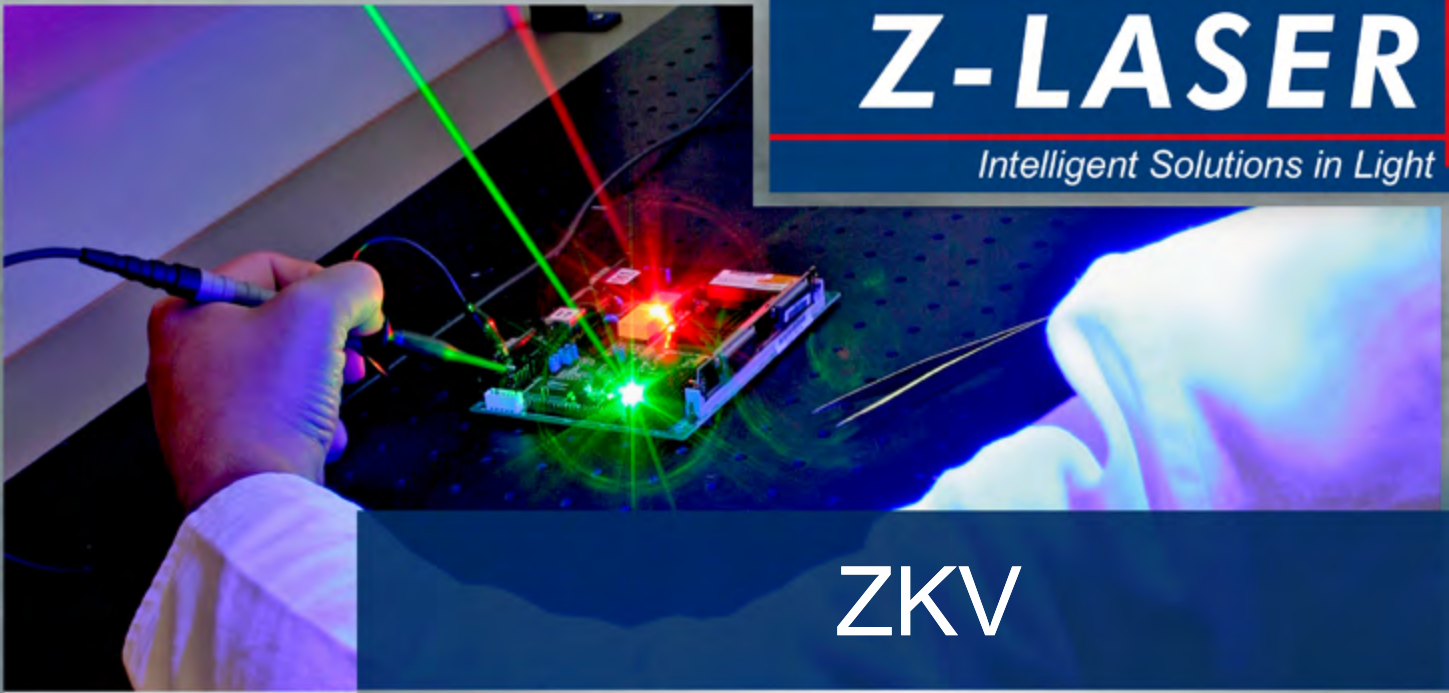


# Z-LASER

*Intelligent Solutions in Light*

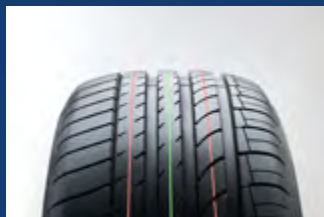


## ZKV

- » Circular projection
- » Adjustable diameter
- » No need of templates
- » Thread holes for easy mounting over working area

Wood

Metal



## Mechanical specifications

Dimensions	Ø 150x345mm
Housing	Aluminium
Connection	AC/DC adapter, europlug
IP rating	IP65
Laser class	2M (EN 60825-1:2007)
Standardisation	EMC-Standard class 4

## Electrical specifications

Output power	Rotating dot laser creating a circle 5mW/635nm or 5mW/515nm
Supply voltage	100 – 240VAC ±10%; 50 – 60Hz

## Optical specifications

Wavelength	515nm, 635nm
Available projection	Circle
Optical angle	15° to 70° (variable)

## Environmental conditions

Housing temperature	-0°C to +50°C (Heating option below 0°C)
---------------------	--

## Circle diameter

Distance*	Min. diameter (15°)	Max. diameter (70°)
500mm	135mm	700mm
1000mm	270mm	1400mm
2000mm	540mm	2800mm
3000mm	810mm	4200mm
4000mm	1080mm	5600mm

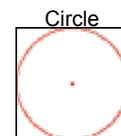
\* Measuring reference point is the front of the circle laser

CE-Conformity according to the directives 2004/108/EC and 73/23/ECC excluding connection type.

## Accessories



## Available projections



## Order code

Z 5 KV - 635 - c15/70

Power | Wavelength | Projection type

Product family name