

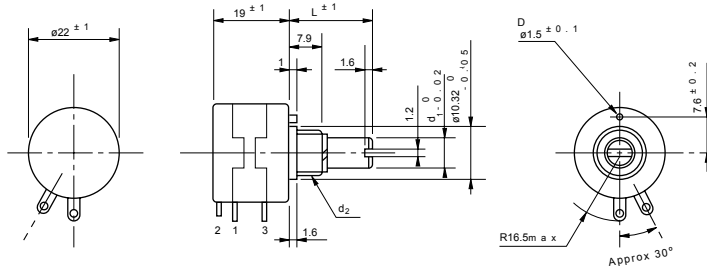


Model 22HHP

Hybrid (bushingmount servomount) Low cost item

Standard dimensions (with metric dimensions)

Bushingmount type

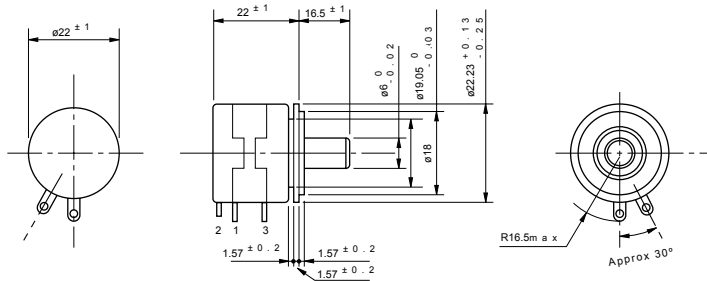


Note: Dimensions of shaft and bushing are equal to those of model 22HP series with wirewound resistive element and please refer to those dimensions and notes



**Model 22HHP-10
(Bushingmount)**

Servomount type (bronze bearing incorporated)



**Model 22HHP-10
(Servomount)**

Standard Model Nos.

Bushingmount type:

5-turn models:	22HHP-5	22HHP-5M
	22HHP-5E	22HHP-5N
10-turn models:	22HHP-10	22HHP-10M
	22HHP-10E	22HHP-10N

Servomount type:

5-turn models:	22HHPS-5
10-turn models:	22HHPS-10

General Specifications

Standard Resistance

Values: 1k, 2k, 5k, 10k, 20k, 50k (Ω) (5-turn)
 2k, 5k, 10k, 20k, 50k, 100k (Ω) (10-turn)

Total Resistance

Tolerance: Standard Class $\pm 10\%$ (K)
 Precision Class $\pm 5\%$ (J)

Independent Linearity

Tolerance:

	5-turn	10-turn
Standard Class	$\pm 0.35\%$	$\pm 0.25\%$
Precision Class	$\pm 0.2\%$	$\pm 0.1\%$

Resolution:

Essentially infinite

Output Smoothness:

Within 0.05% against input voltage (5-turn)
 Within 0.015% against input voltage (10-turn)

Contact Resistance Variation:	Within 5% C.R.V. (5-turn) Within 3% C.R.V. (10-turn)
Power Rating:	1.0W (5-turn) 2.0W (10-turn)
Electrical Travel:	360° X n ±5° (n: No. of turns)
Mechanical Travel:	360° X n $\begin{matrix} +10^\circ \\ 0^\circ \end{matrix}$ (n: No. of turns)
Insulation Resistance:	Over 100MΩ at 1,000V.D.C.
Dielectric Strength:	1 minute at 1,000 V.A.C.
Starting Torque:	Within 5mN·m (50gf·cm)
Stopper Strength:	Approx. 0.9N·m (9kgf·cm)
Max. Working Voltage:	500V
Resistance Temperature Coefficient:	±100p.p.m./°C
Max. Torque exerted on fastening the mounting nut to the bushing:	Within 1.0N·m (10kgf·cm) (in case of panel thickness with over 2.5mm, the rotating torque may become heavier)
Mass:	Approx. 20g (Bushingmount) Approx. 30g (Servomount) (both 5-turn and 10-turn)

■ Special Specifications Available

Shaft with front and rear extension (rear shaft with 6mm dia. and 15mm length), 3-turn type, multi-ganged (available up to 10-gangs), with high torque, special shaft dia. (ø3mm, ø3.175mm, ø4mm, ø5mm, ø6.35mm), special machining on the shaft, with plastic shaft, metal bushing type (22HHPM with anti-rotation pin), simple sealed housing, extra taps (available up to 1 tap only for 10-turn), slipping-clutch incorporated type (20mN·m~60mN·m).

ALTHERIS bv

Vlietweg 17a
2266 KA Leidschendam
The Netherlands

☎ +31 (0)70 3924421

☎ +31 (0)70 3644249

Offices in : Benelux | Germany | France | UK | Italy | USA

🌐 www.altheris.com

✉ sales@altheris.nl

LEADERS IN SENSORS & HEAVY DUTY JOYSTICKS

ALTHERIS
SENSORS & CONTROLS