

NOTES: See Tabulated Sheet

1 Relief permits component shafts to near butt.

2 Hubs and HELI-CAL FLEXURE are made from a single piece of material.

3 Integral Clamp attachment, hex. socket, ISO std., cap screw furnished: both hubs.

4 Backlash: None. No lubrication required.

5 Permitted axial motion from free length:  $\pm .25\text{mm}$ .

6 RPM: Up to 10,000, depending upon application.

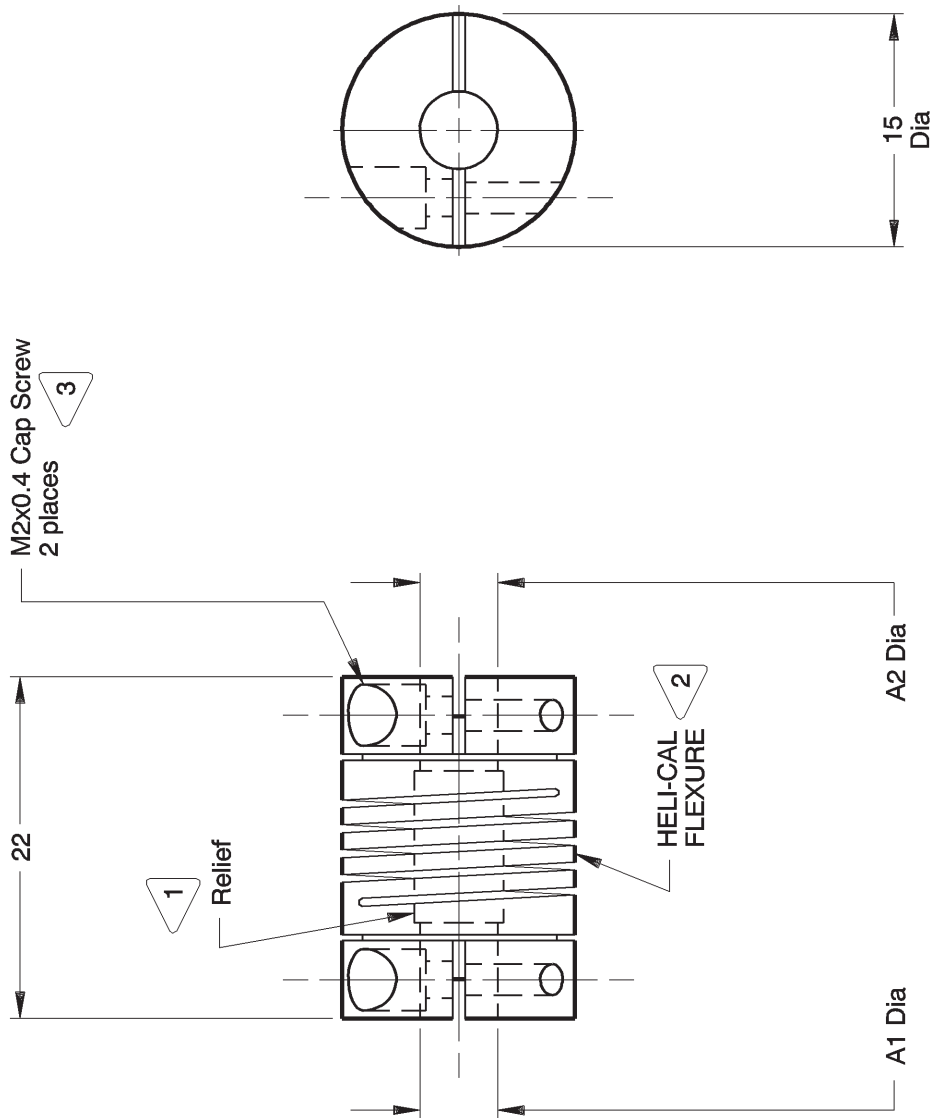
7 Working torque ratings are based upon continuous duty with noted misalignments applied separately and may be increased with improved alignment.

See Tabulated Sheet

8 Permissible shaft misalignment:

Angular, up to 5 degrees. Offset, up to .25mm. (TIR, .50mm.)

9 Part will have a 16.85mm. Clearance Diameter on both ends when any bore is over 5.33mm thru 7.42mm.



W7C15-5mm-5mm SHOWN

NOTICE: THE INFORMATION AND DATA CONTAINED HEREIN IS CONSIDERED PROPRIETARY TO HELICAL PRODUCTS COMPANY, INC., AND SHALL REMAIN THE EXCLUSIVE PROPERTY OF HELICAL. THE HOLDER WILL ASSUME CUSTODY AND CONTROL THAT THIS DOCUMENT WILL NOT BE COPIED, REPRODUCED OR DISCLOSED WITHOUT THE EXPRESS WRITTEN CONSENT OF HELICAL. POSSESSION OF THIS DOCUMENT DOES NOT CONSTITUTE A GRANT TO MANUFACTURE ANY ITEMS. DO NOT SCALE DRAWING.

6-8-01	DATE	LTR	REVISION	CHK
			DRW	MC

Unless otherwise noted dimensions in millimeters.  
 Tolerances are:  
 Decimals: X  $\pm .5\text{mm}$   
 X.X  $\pm .25\text{mm}$   
 X.XX  $\pm .15\text{mm}$   
 Angles:  $\pm 2$  degrees  
 Break sharp corners .25mm max.

APPROVALS	DATE
DRAWN MM	8-4-78
CHECKED GLB	8-4-78
PRODN APA	8-4-78
ISSUED	
WEIGHT	25g (calc)
SCALE	2/1
SIZE	A

HELICAL PRODUCTS CO., INC. P.O. BOX 1069 SANTA MARIA, CA. 93456 U.S.A. PHONE (805) 928-3851 FSC13201	
TITLE	HELICAL FLEXIBLE SHAFT COUPLING
MATERIAL	17-4PH CRES HT
FINISH	Natural
DWG NO	W7C15

ADDITION DATE	PART NUMBER	BORE TOLERANCES		TORQUES (Nm)			TORSIONAL FLEXIBILITY	MASS MOMENT OF INERTIA	COMMENTS	
		+002in -000in	+05mm -00mm	Non-reversing	Shock or Reversing	Momentary				
							A1 Dia	A2 Dia	deg/Nm	
		.094in	.090in	.70	.35	1.4			A1	A2
09 Jun 06	W7C15-3-3M	3.00mm	.094in	.70	.35	1.4				
09 Mar 88	W7C15-3mm-3	3.00mm	.094in	.70	.35	1.4				
09 Mar 88	W7C15-3mm-3mm	3.00mm	.094in	.70	.35	1.4				
09 Mar 88	W7C15-4M-2.5mm	.120in	2.50mm	.70	.35	1.4				
09 Mar 88	W7C15-4M-4M	.120in	.120in	.70	.35	1.4				
	W7C15-4-3	.125in	.094in	.70	.35	1.4				
13 Feb 03	W7C15-4-3mm	.125in	3.00mm	.70	.35	1.4				
09 Mar 88	W7C15-4-4	.125in	.125in	.70	.35	1.4				
09 Mar 88	W7C15-4mm-3mm	4.00mm	3.00mm	.65	.33	1.3				
09 Mar 88	W7C15-4mm-4mm	4.00mm	4.00mm	.65	.33	1.3				
	W7C15-4.5mm-3mm	4.50mm	3.00mm	.65	.33	1.3				
	W7C15-6-3mm	.188in	3.00mm	.60	.30	1.2				
09 Mar 88	W7C15-6-4M	.188in	.120in	.60	.30	1.2				
30 May 89	W7C15-6-4	.188in	.125in	.60	.30	1.2				
	W7C15-6-4mm	.188in	4.00mm	.60	.30	1.2				
03 May 88	W7C15-6-6	.188in	.188in	.60	.30	1.2				
03 May 88	W7C15-5mm-3mm	5.00mm	3.00mm	.60	.30	1.2				
09 Mar 88	W7C15-5mm-4mm	5.00mm	4.00mm	.60	.30	1.2				
23 Jun 01	W7C15-5mm-4.5mm	5.00mm	4.50mm	.60	.30	1.2				
16 Jun 89	W7C15-5mm-6	5.00mm	.188in	.60	.30	1.2				
09 Mar 88	W7C15-5mm-5mm	5.00mm	5.00mm	.60	.30	1.2				
	W7C15-6mm-2mm	* 6.00mm	2.00mm	.60	.30	1.2		Clearance Diam.:	16.85mm	
03 May 88	W7C15-6mm-3mm	* 6.00mm	3.00mm	.60	.30	1.2		Clearance Diam.:	16.85mm	
05 Aug 05	W7C15-6mm-4	* 6.00mm	.125in	.60	.30	1.2		Clearance Diam.:	16.85mm	
16 Jun 90	W7C15-6mm-4mm	* 6.00mm	4.00mm	.60	.30	1.2		Clearance Diam.:	16.85mm	
30 May 07	W7C15-6mm-4.5mm	* 6.00mm	4.50mm	.60	.30	1.2		Clearance Diam.:	16.85mm	
	W7C15-6mm-6	* 6.00mm	.188in	.60	.30	1.2		Clearance Diam.:	16.85mm	
03 May 88	W7C15-6mm-5mm	* 6.00mm	5.00mm	.60	.30	1.2		Clearance Diam.:	16.85mm	
09 Mar 88	W7C15-6mm-6mm	* 6.00mm	* 6.00mm	.60	.30	1.2		Clearance Diam.:	16.85mm	
01 Nov 88	W7C15-8-3mm	* .250in	3.00mm	.60	.30	1.2		Clearance Diam.:	16.85mm	
03 May 88	W7C15-8-4	* .250in	.125in	.60	.30	1.2		Clearance Diam.:	16.85mm	

<b>* NOTE: Bores greater than 5.00mm Dia: bore depth is 6.00mm</b>		APPROVALS	DATE	HELICAL PRODUCTS CO. INC
NOTICE: THE INFORMATION AND DATA CONTAINED HEREIN IS CONSIDERED PROPRIETARY TO HELICAL PRODUCTS COMPANY, INC., AND SHALL REMAIN THE EXCLUSIVE PROPERTY OF HELICAL. THE HOLDER WILL ASSUME CUSTODY AND CONTROL THAT THIS DOCUMENT WILL NOT BE COPIED, REPRODUCED OR DISCLOSED WITHOUT THE EXPRESS WRITTEN CONSENT OF HELICAL. POSSESSION OF THIS DOCUMENT DOES NOT CONSTITUTE A GRANT TO MANUFACTURE ANY ITEMS.		DRAWN		P.O. BOX 1069 SANTA MARIA, CA. 93456 U.S.A PHONE (805) 928-3851/FSCI3201
		CHECKED		TITLE HELICAL FLEXIBLE SHAFT COUPLING
		PRODN		TABULATED BORE SIZES
		ISSUED	6/18/2008 2: 06: 27 PM	DWG NO W7C15

**ADDITIONAL BORE SIZES AVAILABLE UPON REQUEST**

ADDITION DATE	PART NUMBER	BORE TOLERANCES		TORQUES ( Nm )			TORSIONAL FLEXIBILITY	MASS MOMENT OF INERTIA	COMMENTS
		+0.002in -0.000in	+0.05mm or -0.00mm	Non-reversing	Shock or Reversing	Momentary			
13 Mar 89	W7C15-8-6	* .250in	.188in	.60	.30	1.2			Clearance Diam.: 16.85mm
09 Mar 88	W7C15-8-6mm	* .250in	* 6.00mm	.60	.30	1.2			Clearance Diam.: 16.85mm
16 Jun 08	W7C15-8-8	* .250in	* .250in	.60	.30	1.2			Clearance Diam.: 16.85mm
15 Jul 14	W7C15-6.5mm-6.5mm	* 6.50mm	* 6.50mm	.60	.30	1.2			Clearance Diam.: 16.85mm
	W7C15-7mm-4mm	* 7.00mm	4.00mm	.60	.30	1.2			Clearance Diam.: 16.85mm

APPROVALS	DATE	TITLE
DRAWN		HELICAL PRODUCTS CO. INC
CHECKED		P.O. BOX 1069 SANTA MARIA, CA. 93456 U.S.A PHONE (805) 928-3851/FSCI3201
PRODN		HELICAL FLEXIBLE SHAFT COUPLING
ISSUED	5/18/2008 2: 06: 27 PM	TABULATED BORE SIZES

**\* NOTE: Bores greater than 5.00mm Dia: bore depth is 5.00mm**

NOTICE: THE INFORMATION AND DATA CONTAINED HEREIN IS CONSIDERED PROPRIETARY TO HELICAL PRODUCTS COMPANY, INC., AND SHALL REMAIN THE EXCLUSIVE PROPERTY OF HELICAL. THE HOLDER WILL ASSUME CUSTODY AND CONTROL THAT THIS DOCUMENT WILL NOT BE COPIED, REPRODUCED OR DISCLOSED WITHOUT THE EXPRESS WRITTEN CONSENT OF HELICAL. POSSESSION OF THIS DOCUMENT DOES NOT CONSTITUTE A GRANT TO MANUFACTURE ANY ITEMS.

**ADDITIONAL BORE SIZES AVAILABLE UPON REQUEST**