



PRODUCT SPECIFICATIONS

# SYSTEM ACCESSORIES

## HEAT TRACING CABLES

### APPLICATION FREEZE PROTECTION AND PROCESS TEMPERATURE MAINTENANCE

The following information relates to power connection kits, end termination kits and common installation accessories used with Thermon BSX™, RSX™, KSX™, HTSX™, VSX™, FP and HPT heating cables.



**Terminator ZP...** is designed to fabricate power connections, in-line/T-splice connections or for making end terminations. The Terminator ZP-XP is suitable for use in hazardous areas (Ex e T6/T4), harsh industrial environments and has a IP66 rating. The upfront positioning of the terminal block permits easy access during assembly and for future routine maintenance.

The Terminator ZP kit includes; Pipe-mounted expediter with suitable grommet, Junction box with two M25 entries and one M25-B-Exe blind plug, Four 6-mm<sup>2</sup> line/load terminals, Two 6-mm<sup>2</sup> earth terminals, Terminals rated to 22 amps (T6 85°C) or 46 amps (T4 135°C), Maximum voltage rating of 750 Vac. Wallmount version is available.

**Product Reference Legend:**

**ZP-XP** and **ZP-WP** ..... RSX, VSX, BSX, HTSX, KSX, FP, HPT

**ZP-R-XP** and **ZP-R-WP** ..... TESH

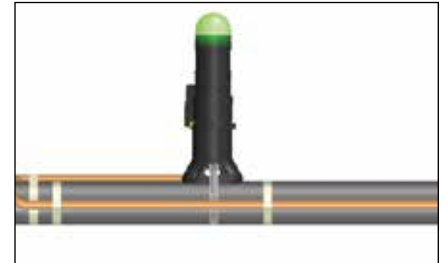


**Terminator ZL...** is designed to provide visual indication of an energized heating circuit. The kit may be utilized as a power connection or an end termination kit. Electrical connections are made in terminal blocks utilizing nickel-plated copper terminals to ensure corrosion-free electrical integrity.

The Terminator ZL kit includes; IP66 rated junction box, yellow LED indicating lamp, four 6-mm<sup>2</sup> line/load terminals, two 6-mm<sup>2</sup> earth terminal, pipe-mounted fitting, heater cable grommet.

**Product Reference Legend:**

**ZL-XP** and **ZL-WP** ..... RSX, VSX, BSX, HTSX, KSX, FP, HPT



**Terminator Beacon...** end-of-circuit light kits are designed specifically for rapid, trouble-free installation of Thermon self-regulating and power-limiting, parallel resistance polymer insulated heating cables. The Terminator Beacon utilizes a high intensity green LED assembly for superior day or night visibility.

**Product Reference Legend:**

**ZE-B**.... BSX, RSX, HTSX, KSX, VSX, FP, HPT



**Terminator ZS/ZE...** designed to fabricate accessible outside-the-insulation splices or end terminations of Thermon Heating Cables. Electrical connections are made using wire fasteners (for applications requiring terminations to be made with terminal block connections, the Terminator ZP kit may be used).

**Product Reference Legend:**

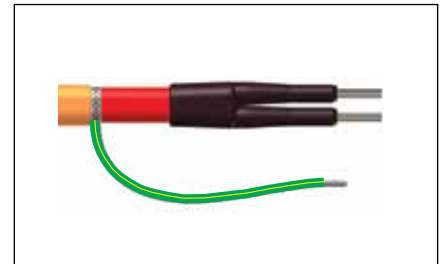
**ZS/ZE-XP** ..... BSX, RSX, HTSX, KSX, VSX, FP, HPT



**PETK...** circuit fabrication kits are required for use with all Thermon Parallel Heating Cables Connection Kits. Kits for termination of SX cables include a power connection boot, end cap, RTV adhesive and a caution label. Kits for termination of HPT and FP cables also include tape strip and a distinct grommet.

**Product Reference Legend:**

**PETK-1** ..... BSX, RSX, VSX  
**PETK-2** ..... KSX, HTSX  
**PETK-3** ..... FP, HPT  
**PETK-3-ECM** ..... FP, HPT  
**PETK-3-ZT** ..... FP, HPT  
**PETK-4** ..... HPT > 240°C



**SCKT...** splice connection termination kits are required when preparing outside-the-insulation splices with all Thermon Parallel Heating Cables Connection Kits. Kits for terminations of SX cables include 2 splice connection boots, assorted wire nuts and RTV adhesive. Kits for termination of HPT and FP cables also include a distinct grommet.

**Product Reference Legend:**

**SCKT-1** ..... BSX, RSX, VSX  
**SCKT-2** ..... KSX, HTSX  
**SCKT-3** ..... FP, HPT

**THERMON The Heat Tracing Specialists®**

ISO 9001 REGISTERED European Headquarters: Boezemweg 25 • PO Box 205 • 2640 AE Pijnacker • The Netherlands • Phone: +31 (0) 15-36 15 37  
 Corporate Headquarters: 100 Thermon Dr • PO Box 609 San Marcos, TX 78667-0609 • Phone: 512-396-5801 • 1-800-820-4328  
 For the Thermon office nearest you visit us at . . . [www.thermon.com](http://www.thermon.com)



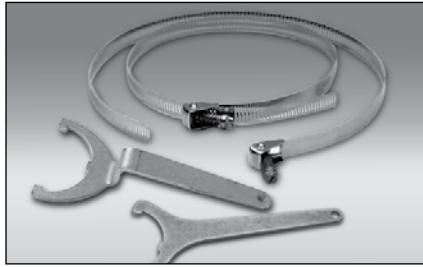
# SYSTEM ACCESSORIES

## HEAT TRACING CABLES

### CABLE END TERMINATION KITS, ATTACHMENT TAPES AND MISCELLANEOUS ITEMS



**CS-L\*-Ex...** Circuit switch with lamp to be used as an in-line isolation switch for single phase, phase-phase and 3-phase heat tracing circuits. Available in 16 A, 25 A and 40 A versions.



**B-4, B-10, B-21...** stainless steel attachment bands for securing Thermon nonmetallic kits to pipes.  
**B-4...** for pipes up to 100 mm diameter  
**B-10...** for pipes up to 250 mm diameter  
**B-21...** for pipes up to 530 mm diameter  
**ABA-25...** for pipes up to 25 mm diameter  
**ABA-40...** for pipes up to 40 mm diameter  
**Terminator-LN-Tool...** for tightening the locknuts of the Terminator kits. Tool is recommended to ensure enclosure is properly secured to the pipe-mounted expediter.



**IEK-SX...** Insulation entry kit for use in (non) hazardous locations that protects and seals the heating cable while penetrating insulation cladding.

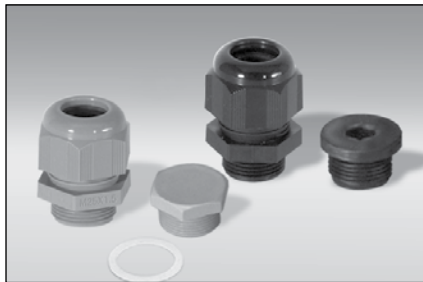
BSX ..... IEK-SXM  
 KSX, HTSX, FP, HPT ..... IEK-SXS  
 RSX, VSX ..... IEK-SXL  
 TESH ..... IEK-TES



**M25-SX-Ex...** Ex e approved nonmetallic gland for use with M25 junction boxes.

**M25-SX-IND...** nonmetallic gland for use with JB-K-0-M25 junction boxes

BSX ..... M25-SXM-...  
 KSX, HTSX, FP, HPT ..... M25-SXS-...  
 RSX, VSX ..... M25-SXL-...  
 TESH ..... M20-PWR-...



**M25-PWR-Exe, M25-B-Exe...** Ex e approved nonmetallic gland and plug for use with Terminator.

**M25-PWR-Exe...** power gland is suitable for securing power cables with diameters between 8 and 17 mm.

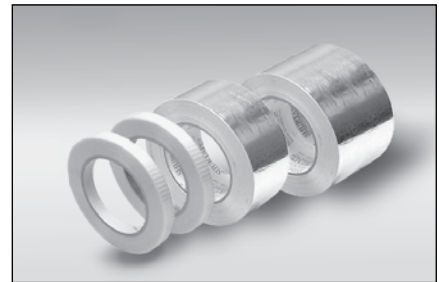
**M25-B-Exe...** blind plug.

**M25-PWR-IND, M25-B-IND, M25-LN-IND...** non-metallic gland and plug for use in threaded openings of junction boxes.

**M25-PWR-IND...** power gland is suitable for securing power cables with diameters between 11 and 18 mm.

**M25-B-IND...** blind plug and sealing washer.

**M25-LN-IND...** locknut for securing M25 glands in JB-K-1 and JB-K-2 boxes.



**FT-1L, FT-1H...** fixing tape for attaching heating cable to piping every 300 mm or as required by code or specification.

**AL-20H, AL-30H...** aluminium tapes for continuous (longitudinal) covering cable to piping and/or equipment.

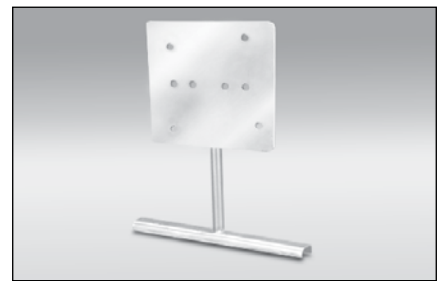
Item Number	Max. Temp. (Exposure)	Min. Temp. (Installation)	Size (mm x m)
<b>FT-1L</b>	93 °C	5 °C	12 x 33
<b>FT-1H</b>	260 °C	-40 °C	12 x 33
<b>AL-20H</b>	150 °C	-5 °C	50 x 55
<b>AL-30H</b>	150 °C	-5 °C	76 x 55



**SK-SX-Oj...** Ex e approved under-the-insulation repair and splice kit for overjacketed SX cables. Kit includes stainless steel shells, screws, grommets, RTV adhesive/sealant, insulation tape and the necessary wire pins/lugs.



**CL...** vinyl-based peel-and-stick caution labels are intended for direct exposure to industrial environments. Electrically heated pipelines and vessels should be clearly identified at frequent intervals along the pipeline or vessel. Caution labels should be placed at 3 to 6-m intervals or as required by code or specification. Additional languages or other texts are available; contact Thermon.



**XP-1...** predrilled stainless steel (type 304) mounting bracket designed for mounting Thermon junction boxes and thermostats directly to the pipework. The bracket is easily secured to the pipe using B-4, B-10 or B-21 attachment bands. The XP-1 utilises a 110-mm standoff.

XP-1-140X140 ..... JB-K-0, JB-K-1, JB-K-2  
 XP-1-WP ..... Terminator WP